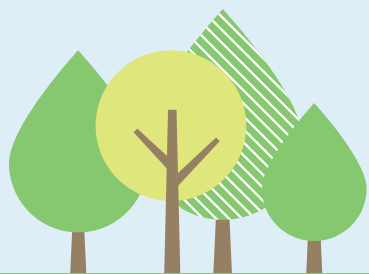


CAMP WORKS

**A BY-THE-NUMBERS LOOK AT THE LONG-TERM
IMPACT OF JEWISH OVERNIGHT CAMP**



FOUNDATION FOR
JEWISH
CAMP

THE NUMBERS ARE IN.

Research indicates that Jewish camp does indeed work.

By examining and cross-tabulating the results of 26 existing Jewish community population surveys, we compared the attitudes and behaviors of adults who had attended Jewish camp as children with those who did not. Survey responses covered 13 different areas of adult behavior or attitude, including synagogue membership, observance of holidays, donating to Jewish charities, and connection to Israel.

Camp attendance increases the likelihood of adult participation and identification in every one of these areas.

Survey samples were analyzed to control for Jewish education and family background, allowing comparisons between adult behaviors of campers and non-campers whose Jewish upbringings were similar before anyone boarded the camp bus. The remaining differences reflect the direct influence of the camping experience.

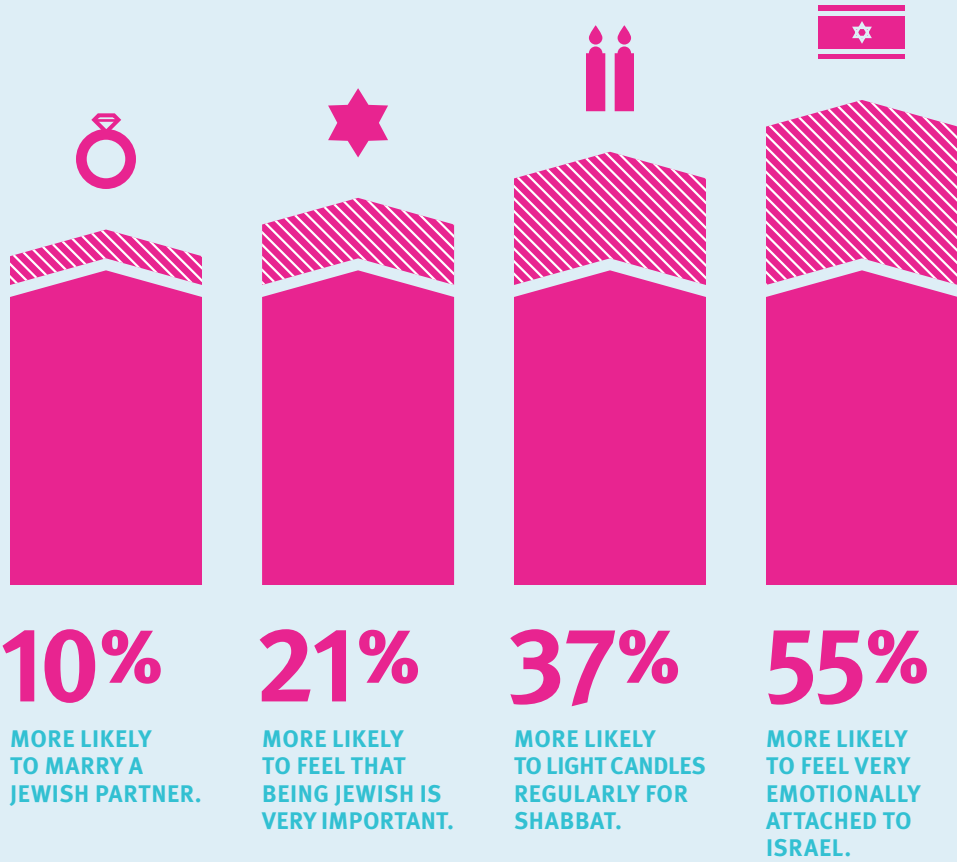


CAMP WORKS

THE LONG-TERM INFLUENCE OF JEWISH OVERNIGHT CAMP

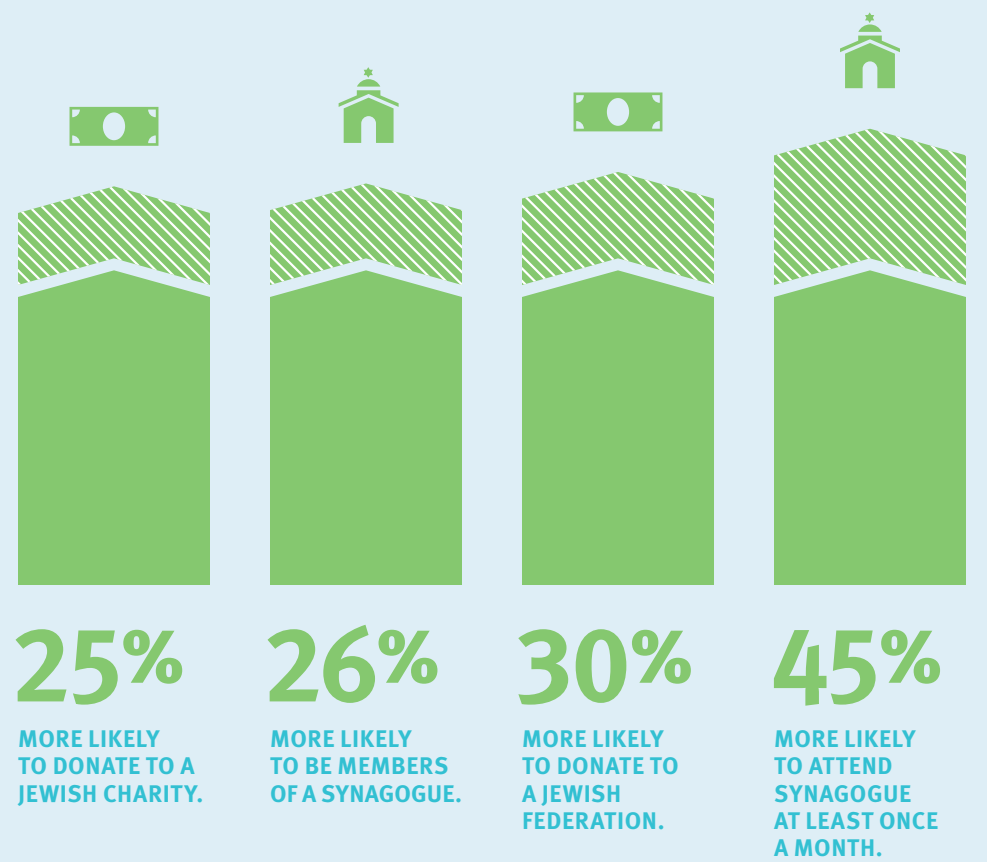
JEWISH CAMP BUILDS JEWISH IDENTITY

AS ADULTS, CAMPERS ARE:



JEWISH CAMP BUILDS JEWISH COMMUNITY

AS ADULTS, CAMPERS ARE:



JEWISH CAMP BUILDS JEWISH LEADERSHIP



70,000+
KIDS ATTENDED JEWISH OVERNIGHT CAMP THIS YEAR.
(2010 ESTIMATE)



150+
NONPROFIT JEWISH OVERNIGHT CAMPS CURRENTLY OPERATE IN NORTH AMERICA. (AS OF 2010)

JEWISH CAMPS CAN BE FOUND IN:

27 U.S. STATES

6 CANADIAN PROVINCES

OUR VISION

Summers at Jewish overnight camp turn Jewish youth into spirited and engaged Jewish adults, laying the groundwork for strong Jewish communities. The Foundation for Jewish Camp aspires to elevate the field of Jewish camp, conferring proper recognition and granting appropriate support to expand its impact across our community, so that camp can be a critical element of every Jewish young person's education.

OUR MISSION

The Foundation for Jewish Camp unifies and galvanizes the field of Jewish overnight camp and significantly increases the number of children participating in transformative summers at Jewish camp, assuring a vibrant North American Jewish community.

*Figures shown in the "Jewish Identity" and "Jewish Community" sections of this poster are from the report **CAMP WORKS: The Long-term Impact of Jewish Overnight Camp**, by Steven M. Cohen, Ron Miller, Ira M. Sheskin and Berna Torr. Figures shown in the "Jewish Leadership" section are from the reports **The Jewish Sector Workforce: Report of a Six-Community Study**, by Shaul Kelner, Michael Rabkin, Leonard Saxe and Carl Sheingold, the 2008 **Educators in Jewish School Study**, conducted by the Jewish Education Service of North America (JESNA), and **Generation of Change: How Leaders in Their Twenties and Thirties Are Reshaping American Jewish Life** by Professor Jack Wertheimer and a team of researchers under the auspices of The AVI CHAI Foundation. Figures shown for camp attendance and locations are based on data gathered annually by FJC.*

To download a PDF of the *CAMP WORKS* report, visit www.jewishcamp.org/research.

FOUNDATION FOR JEWISH CAMP

15 West 36th Street, 13th Floor, New York, NY 10018
tel 646.278.4500 fax 646.278.4501
www.jewishcamp.org